



UPM Kymi



Environmental and societal responsibility 2024

UPM Kymi

The UPM Kymi integrated mill site is located on the shore of the Kymijoki River in Kuusankoski district in Kouvola. UPM's pulp mill and UPM Communication Papers Oy's paper mill operate in mill area.

The Kymi mills form a diverse concentration of bioforestry industry that produces bleached birch and softwood pulp, uncoated and coated fine and specialty papers, as well as bioenergy. Crude tall oil and turpentine from pulp production are utilized in bioeconomy products. Our raw materials are birch, pine and spruce. Fine and specialty papers are produced from 100% chemical pulp. In addition to UPM's mills, the site houses a biomass power plant operated by Kymin Voima Oy, which produces heat and electricity for the mills and the neighboring community, as well as Schaefer Kalk Finland Oy's carbonate (PCC) plant.

UPM has had a significant impact on the birth and development of the local community in Kouvola for over 150 years. Even today, our impact on the region is significant, both as a taxpayer and as an employer.

This report covers the environmental issues of the Kymi pulp and paper mill.



UPM Kymi Environmental and Societal Responsibility 2024 is a supplement to the Corporate Environmental and Societal Responsibility Statement of UPM's pulp and paper mills (available at www.upm.com) and provides mill-specific environmental and societal performance data and trends for the year 2024. The annually updated mill supplements and the UPM Corporate Environmental and Societal Responsibility Statement together form the joint EMAS Statement of UPM Corporation. The next Updated UPM Corporate Environmental Statement and also this supplement will be published in 2026.

UPM is a material solutions company, renewing products and entire value chains with an extensive portfolio of renewable fibres, advanced materials, decarbonization solutions, and communication papers. Our performance in sustainability has been recognized by third parties, including EcoVadis and the Dow Jones Sustainability Indices. We operate globally and employ approximately 15,800 people worldwide, with annual sales of approximately €10.3 billion. Our shares are listed on Nasdaq Helsinki Ltd.

UPM - we renew the everyday
Read more: upm.com

Production capacity	715,000 t of coated and uncoated fine and specialty paper 870,000 t of birch and conifer pulp
Personnel	669
Products	Fine papers: UPM Finesse, UPM Fine, UPM PrePersonal, UPM Poste, UPM Script, UPM Office, New Future Specialty papers: UPM Vellum, UPM Sollum, UPM LabelCoatPrime, UPM JetLabel Pulp: UPM Betula and UPM Conifer
Bioenergy	Heat energy and electricity
Side products	Lime sludge and sodium bisulphite
Residues	Tall oil and turpentine
Certificates	EMAS (EU Eco-Management and Audit Scheme) - Environmental management and audit system ISO 14001 - Environmental Management System ISO 9001 - Quality Management System ISO 22000 - Food Safety Management System ISO 45001 - Occupational Health and Safety System ISO 50001 - Energy Management System (pulp mill) EES+ - Energy efficiency system (paper mill) PEFC Programme for the Endorsement of Forest Certification FSC® wood origin monitoring system - Forest Stewardship Council All certificates can be found from UPM's Certificate Finder (available at www.upm.com/responsibility)
Environmental labels	EU Ecolabel UPM pulp products are approved for use in EU Ecolabel and Nordic Ecolabel paper products.



For more information about FSC certification visit fsc.org



For more information about PEFC certification visit pefc.org



EU Ecolabel : FI/011/001

Review of the year 2024

Kymi had a varied year 2024. The effects of the war in Ukraine were still visible, and the global economic cycles and the political strikes in the spring affected our operations.

Kymi's environmental performance was at a good level in 2024. The wastewater treatment plant operated efficiently throughout the year and air emissions were at a normal, low level. The entire integrated mill operation was material-efficient and we used raw materials scrupulously. All of the waste generated in the processes was recovered, except of the green liquor dregs from pulp production.

Operations in compliance with the environmental permit

Obligations related to environmental protection were covered systematically in compliance with the environmental permit.

The wastewater treatment plant worked well and efficiently throughout the year. The mill's emissions were below the permit conditions in all areas, and there were no deviations from the environmental permit limit.

The integrated mill site's environmental objectives included activities under the Clean Run program launched in 2011, reducing abnormal emissions, increasing environmental awareness among employees,

decreasing water consumption and wastewater discharges, decreasing odor emissions and lime kiln particle emissions, increasing the reuse of process waste and reducing the amount of solid waste going to a landfill as well as active participation in studies on the beneficial use of green liquor dregs.

The Clean Run program was part of the Kymi mill site's normal operations in 2024. All abnormal emissions were recorded using the One Safety tool and their underlying causes were studied. An environmental review was arranged once a week during the pulp and paper mill morning meetings to review environmental issues and the events of the previous week in more detail.

Three pieces of stakeholder feedback were received during the year, two of which were related to the smell of temporarily stored sawdust on the old part of Kymi, noise, increased truck traffic and a decrease in comfort, and one to smell during the pulp mill's shutdown in the nearby area.

Several investments were made in 2024 to reduce the environmental impact. We built a new bark storage field that includes proper stormwater treatment and enhanced

air supply and sludge treatment at the wastewater treatment plant.

Safe working environment

We are committed to safety and our permanent goal is zero accidents. As a proactive measure, we require our employees and contractors to use UPM's global One Safety reporting tool to report all near misses and safety and environmental observations. Reported cases are processed daily and corrective actions are initiated without delay.

We actively encourage our personnel to conduct safety walks and to have safety discussions. The targets set for proactive safety reports were exceeded at the paper and pulp mill.

UPM monitors the development of occupational safety with the TRI accident frequency indicator, which considers not only accidents resulting in absence, but also accidents requiring medical treatment or temporary work. The TRI frequency was 6.3 at the paper mill and 5.3 at the pulp mill. The figures include TRI cases of our own and external companies' personnel.



Vesa Volmari
General Manager
Kymi Pulp Mill



Päivi Hyvärinen
Environmental Manager
Kymi Pulp Mill



Salla-Sisko Vartti
Safety and Environmental Manager
Kymi Paper Mill



Matti Laaksonen
General Manager
Kymi Paper Mill

Contribution to UN Sustainable Development Goals in 2024



Water

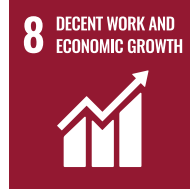
AOX emissions decreased between 2015 and 2024

30%

Nitrogen emissions decreased between 2015 and 2024

32%

Figures apply to the Kymi pulp mill production.



Safety

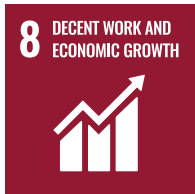
Proactive safety work resulted in

2,737

safety and environmental observations recorded by paper and pulp mill employees and contractors. In addition, safety and environmental walks and discussions reached a total number of

2,780

The entries are part of preventive safety work, as they support the sharing of information and learning from events.



Community

In work placement or apprenticeship, there were

45 students and

3 thesis workers



Air

Sulfur dioxide emissions at the Kymi pulp mill were reduced between 2015 and 2024 by

97%



Energy

In 2024, energy from renewable fuels accounted for

89%

The pulp production used black liquor as main fuel.



Training

At the paper and pulp mill, there were personnel training hours, a total of

8,917



Certified fiber

73%

of fiber used in pulp production was PEFC and/or FSC certified. UPM's target is to use only certified fiber by 2030.

100%

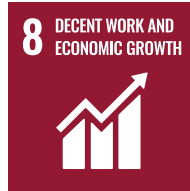
of fiber in paper production was PEFC and/or FSC certified. UPM's target is to use only certified fiber by 2030.



Supply chain

96%

of raw material spend covered by UPM Supplier and Third Party Code (wood not included).



Taxes

The local tax impact of the integrated mill is approximately

EUR 11 million

Real estate tax: EUR 0.5 million
Estimate of tax on salaries: EUR 0.8 million
Estimate of corporate income tax: EUR 9.3 million based on the number of employees*

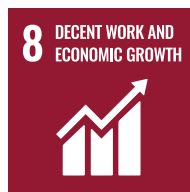
*share for all the municipalities approx. 30%. Each municipality receives a share of this depending on the ratios calculated based on business and forest operations in the municipality.



Waste

0 t

process waste was sent to a landfill from the paper mill. From the pulp mill the only waste fraction taken to a landfill was green liquor dregs.



Employment

Kymi's integrated mills site employed

669 employees and

119 summer workers

Air



All of Kymi's air emissions were below the environmental permit limits. In May 2023, a major mechanical improvement was made to one field of lime electrostatic precipitator during a maintenance shutdown, replacing the emission and filtration equipment. As a result, particulate emissions from the lime kiln were lower in 2024 than in previous years.

99.2% of weak malodorous gases and 99.8% of strong malodorous gases were recovered and burned.

TRS emissions at the Kouvola City Environmental Services' measuring station in central Kuusankoski remained low. In 2024, the concentration limit of 5 ug/m³ was exceeded in 0.03% of the annual hours, which equals less than three hours. The decrease in the number of hours above 5 ug/m³ is attributable to improvements in the collection of weak malodorous gases from the pulp mill's fiber line in previous maintenance shutdowns.

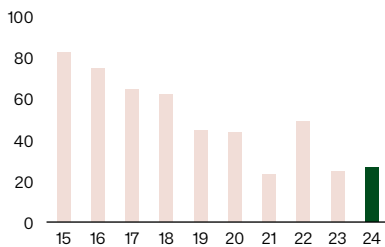
Carbon dioxide emissions were at Kymi's normal level in 2024. As of 2019, CO₂ consumed by the PCC plant is now deducted from our CO₂ emission figures in accordance with the EU Emission Trading Scheme.

Air emissions represented the best usable technology possible in relation to the emission levels set by the BAT conclusions on the paper and pulp industry.



Gaseous sulfur emissions
SO₂*

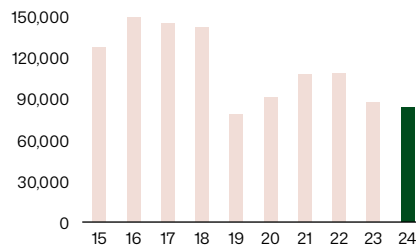
t/y



SO₂ and malodorous sulfur emissions as sulfur dioxide

Carbon dioxide, CO₂*
(fossil emissions from own energy production, scope 1)
CO₂ sequestered in PCC reduced in 2019-2024

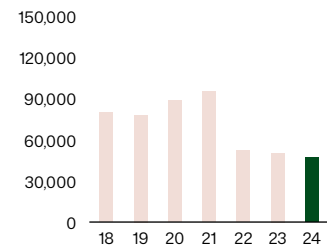
t/y



* Includes Kymin Voima Oy's emissions with regard to the energy consumed by Kymi.

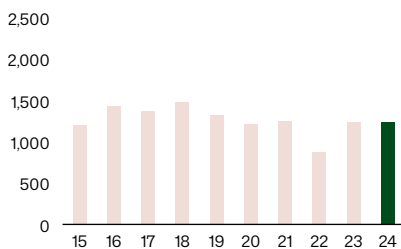
Carbon dioxide, CO₂
(fossil emissions from purchased energy, scope 2)

t/y



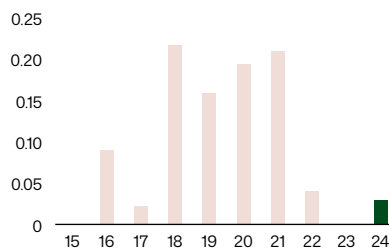
Nitrogen oxides, NO₂*

t/y



Percentage of TRS hourly average concentrations above 5 µg/m³ per year

% of total hours of the year



Waste



The total amount of waste produced in 2024 was 28,900 tonnes, of which 9,382 tonnes were disposed of as dry solid matter at the Lamminmäki landfill. No process waste from the paper mill was taken to a landfill, only green liquor dregs was disposed of at Lamminmäki.

Green liquor dregs from pulp production is a challenging waste fraction to recycle. We are working hard to find a sustainable use for it, but as there were no ongoing beneficial uses, all the green liquor dregs generated by the mill had to be dumped in landfills.

A joint project between UPM's Finnish pulp mills and an external operator is exploring the processing of green liquor dregs into building products. Test runs were conducted in 2023 and further measures will be decided during this year.

Around 4,200 tonnes of ash have been delivered for reuse in 2024. As before, ash created during bioenergy production was delivered for granulation, after which it was

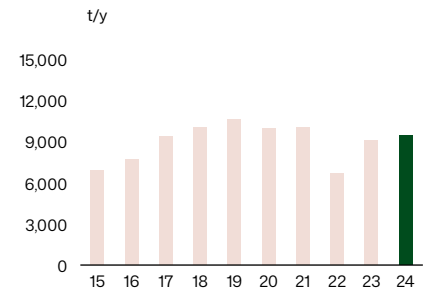
applied to forests owned by UPM. The idea is to recycle the nutrients from the wood that is brought to the mill back into the forest. Another reuse application was the binding of green liquor dregs in the Lamminmäki landfill structures.

During 2024, around 6,500 tonnes of bark waste was delivered to be reused as raw material for growing media and landscaping. In addition, 3,460 tons of lime sludge has been delivered for use as a fertilizer.

Kymi continued separate collection of packaging glass and plastic during the year. Packaging glass was collected in all three personnel canteens at the integrated mill, as well as in the pulp mill recovery and fiber line break rooms. Plastic is collected at several collection points in the mill's departments, which receive clear and colored film plastic in the packaging of incoming shipments. The plastic waste collected from the mill is taken to a recycling plant, where it is processed to produce recycled plastic pellets, mainly for the domestic plastics industry.



Solid waste taken to a landfill as dry matter



Controlling invasive species, such as hogweed, in the integrated mill area was continued as planned.

Water



The wastewater treatment plant operated steadily and efficiently throughout the year. The reduction levels indicating the efficiency of the treatment plant were 99% for biological oxygen demand (BOD) and 77% for chemical oxygen demand (COD). Solids were reduced by 95%.

In 2024, the total water consumption at Kymi was around 82 million m³. The total amount of water used was at the level of normal production years. The specific consumption of water at the pulp mill has decreased significantly from the previous level, thanks to the optimization of the softwood line washes.

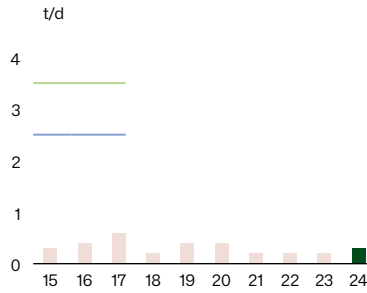
The paper mill's waste water volume per tonne of production, as well as solids losses, were elevated throughout the year. The increased levels were due to temporary adjustments in the paper mill's production.

The specific wastewater volume and the specific volume of solids losses of the pulp mill were at a good low level, as the wastewater treatment plant worked well throughout the year.

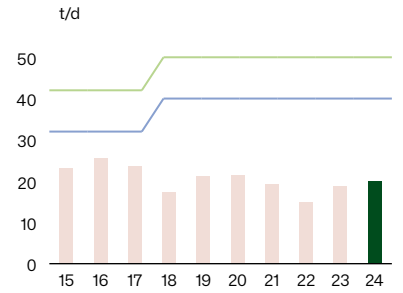
The water consumption and water emissions of the pulp and paper mill represented the best usable technology possible in relation to the emission levels set by the BAT conclusions on the paper and pulp industry.

Stormwater collected from the new bark storage area is settled in the 1,600 m³ stormwater basin completed in summer 2024.

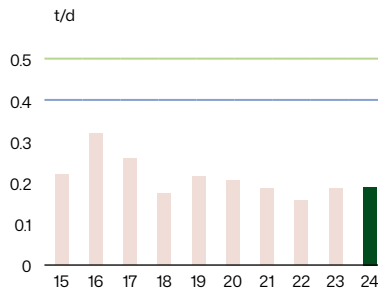
Biological oxygen demand, BOD



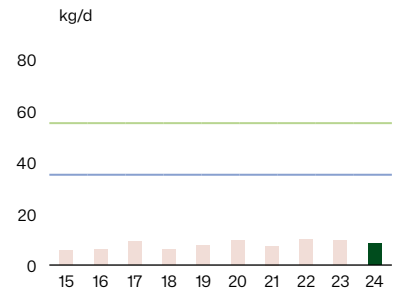
Chemical oxygen demand, COD_{Cr}



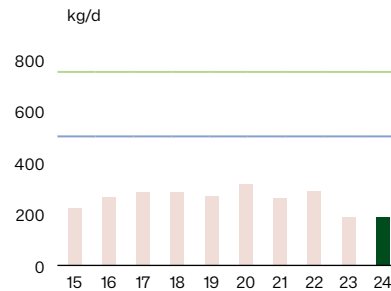
Adsorbable organic halogen compounds, AOX



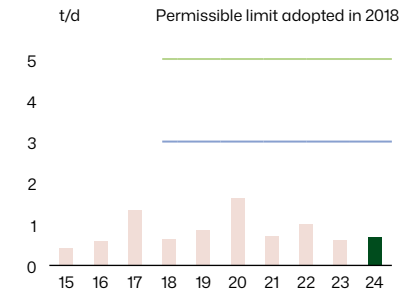
Phosphorus, P



Nitrogen, N



Solids



— Permissible limit, monthly mean value
 — Permissible limit, annual mean value



Management of crises and exceptional situations

The following types of events are included within the management of crises and exceptional situations and communications at the Kymi mill property and surrounding area:

- Serious accidents and near-miss situations (major fires, explosions, chemical accidents etc.)
- Environmental damage
- Serious occupational injuries (including accidents on the way to or from work) and traffic accidents at the mill site
- Serious interruptions in production
- Other exceptional situations such as sabotage, demonstrations, work health and safety risks, pandemics, risks that could harm UPM's reputation, cyber threats and network destruction, and threatening situations not within Kymi, e.g. threats from another industrial plant.

Rescue operations are always led by the rescue authorities. The operational management of emergencies is the responsibility of the production organization. Operational management means, for example, the controlled shutdown of production and other measures to bring the exceptional situation under control. Investigation of the incident and the flow of information proceed in accordance with the organization's chain of command and agreed roles. The crisis communication group either consists of members of the mill's management group or is agreed on separately on a case-by-case basis.

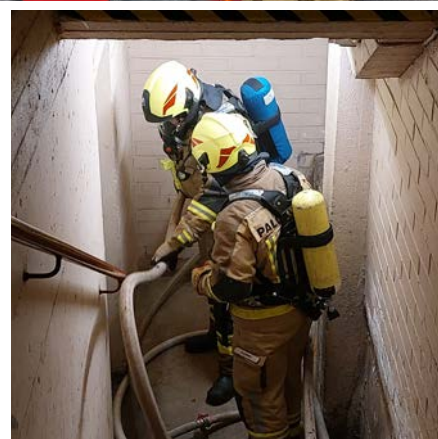
Exceptional situations concerning Kymin Voima Oy and projects being run at the Kymi



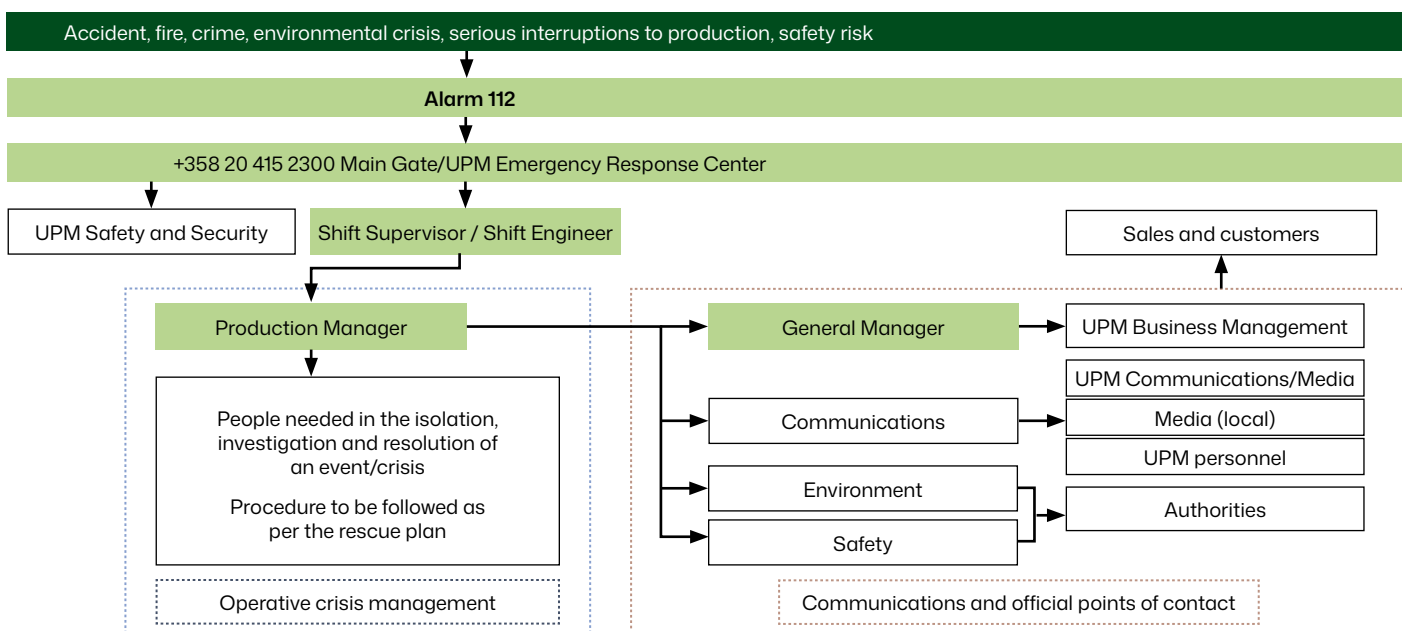
To maintain operational readiness, the mill's fire brigade trains regularly on a weekly basis.

mill site will be dealt with in accordance with the Kymi guidelines and organizational actions. External companies operating on the mill site will follow their own guidelines. However, all emergencies will be reported as per the Kymi mill emergency policy.

The Kymi mill fire brigade primarily takes care of fire and rescue operations at the mill site and as a contract fire brigade of the Kymenlaakso Rescue Department. Last year, new foam fire extinguishing equipment was purchased for the fire service.



The crises management chain of command – communications and flow of information at UPM Kymi



Societal responsibility

Our goal at UPM is to be the industry leader in occupational health and safety. We strive to reduce and eliminate accidents under our control through continuous improvement, preventive safety work and effective risk management. Our employees, as well as business partners and their employees, are required to adopt safe work practices and comply with the rules and standards that we have established.

Before accessing UPM production sites, contractors participate in UPM safety training, which presents and demonstrates basic safety requirements. This is complemented by job-specific safety inductions and work permits.

Kymi makes proactive safety notifications actively. Last year, 86% of the paper mill employees recorded environmental and safety observations, walks and discussions in the One Safety tool, with a total of over 3,300 entries. At the pulp mill, the recording activity was 72% and there were almost 2,200 entries.

Despite our continuous efforts to prevent accidents, four TRIs occurred in the paper mill in 2024, all for UPM employees. The pulp mill had three TRI cases, one of which occurred to the contractor and two to its own employees.

We regularly organize safety-related training for our staff, such as hot work and occupational safety card training. In the spring, we had a Occupational Safety Week, during which our staff visited checkpoints introducing them to first aid skills and what the mill's environment looks like when viewed from a forklift or train locomotive.

A project aimed at developing process safety and harmonizing operating methods was launched at Finnish pulp mills the year before last. At Kymi, the project package has been divided for implementation in 2024–2026 and it has progressed as planned. The audit carried out at the end of last year concluded that the targets set for 2024 have been achieved.

The safety project initiated in the Group in 2023 continues, and last year UPM's new safety principles and vision were published. They were reviewed with Kymi's personnel, discussing what they mean in practice in the daily operation at the mill and how they show in daily work. Discussions focused on what we need to preserve and strengthen, what to improve and develop, what new things to start and what to leave out in order to implement the safety vision and principles. Action plans have been drawn up on the basis of these discussions.

Towards good health and well-being

As in previous years, employees have at their disposal an ePassi, the balance of which can be used for various sports, cultural and welfare services. All personnel also have the

opportunity to use online services, which offer programs for break exercises and wellness challenges, as well as remotely guided exercise at home or work.

At the pulp mill, one of the main goals of the occupational health care action plan was to support musculoskeletal health. As a result, the invitation to the occupational physiotherapist's health check was sent to a larger group of employees than before.

The paper mill's Kyminvointi project focused on establishing the use of the digital working capacity management system AinoHealthManager as part of the early intervention process. Supervisors were trained both in the use of the system and in early intervention discussions. In order to prevent musculoskeletal disorders, employees were offered the possibility for an additional occupational physiotherapist's health check.



Since the beginning of last year, employees at UPM have been able to choose to make use of the company bicycle benefit. We encourage our employees to cycle and enjoy the outdoors, while reducing their carbon footprint. Nearly 180 people used the employee bicycle benefit last year.

We encourage continuous professional development

Our long-term goal at UPM is to ensure high performance and continuous professional development. In Kymi, skill development has been prioritized in the pulp and paper mill production worker positions and is promoted through shift-based training plans. A change project of the operating model was launched at the pulp mill, which aims to extend the maintenance expertise in production and thus improve the operational reliability of the mill.

An extensive management coaching program was launched at the Kymi pulp mill, which will continue in 2025. The aim of the program is to improve profitability through better management, clearer communications and a more responsible culture. The package is divided into five periods, all of which have two days of face-to-face coaching. Management coaching is attended by all salaried employees working in the pulp mill as well as the members of the management group. Last year, there were also five occupational guidance training days, which were attended by 150 people working at the pulp mill.

In total, there were 4,124 personnel training hours at the pulp mill and 4,793 at the paper mill.

We use our apprentice programs to ensure that future employees have the necessary skills. A total of 41 people studied in our training programs, which mainly prepare for employee tasks in production and maintenance.

Assessments support the development of operations

Our operations are regularly assessed by independent external experts. In the external audits carried out last year, no deviations were found at the pulp mill and four minor deviations were found at the paper mill. We received positive feedback about the cleanliness of the mill and the good management of our personnel of matters related to occupational safety, environmental protection, food safety, quality and energy efficiency.

The Multisite assessments of UPM's mills are carried out in accordance with a separate plan. Internal assessments concern all certified systems. The goal is to ensure that the practices of different units are as compatible as possible. The auditors' extensive expertise in UPM's other units and industries brings new views to the development of operations.

Community engagement

Well-functioning dialogue with stakeholders is key to our success. We are committed to promoting the vitality of the communities near our facilities through active collaboration and open dialogue with different stakeholders, as well as through different sponsorship projects.

We participated in recruitment events organized by educational institutions and other operators in the region, as well as visited the Kouvola, Kotka and Mikkeli campuses of the Xamk South-Eastern Finland University of Applied Sciences to introduce ourselves. Forest ambassador activities continued as in previous years and we reached about 140 eighth-graders. Our goal is to increase knowledge about jobs in the sector and encourage young people to consider the forest industry.



In August, about 150 sixth-graders from five different schools in Kouvola participated in a forest excursion day organized by UPM in cooperation with the Finnish Forest Association and 4H. The forest excursion provided pupils with a camping experience and the opportunity to learn about the sustainable use of commercial forests in an interesting way. During the excursions, the pupils visited with functional checkpoints guided by experts, where they learned about the growth of wood and the carbon cycle, the forest as a recreational destination, forest regeneration, and the use of forests as raw material for various wood-based products. In addition, every pupil got a chance to plant a seedling that will become a part of a forest and have a snack by campfire.

The My Workplace visit days continued at the paper mill, where the paper mill personnel had the opportunity to bring their loved

ones to the mill to learn about the operations of the paper mill.

Value creation generates tax revenue

The tax revenues generated by UPM's operations have a significant social impact at both national and local level. In 2024, UPM's corporate income taxes paid and property taxes were approximately 176 million euros in total (EUR 221 million in 2023).

At the local level, the municipal share of corporation tax and property taxes paid support the economy. In addition, the municipal taxes paid by workers on their wages have a significant regional impact. The purchasing power of UPM's employees and subcontractors also develops and maintains the vitality of the sub-regional communities. In 2024, the local tax impact of the Kymi integrated mill would be around 11 million euros.

We use nearly four million cubic meters of wood in our mill every year, most of which is sourced locally. This brings income not only to forest owners, but also to forest professionals and operators in the logistics chain.

UPM is the fourth largest employer in Kouvola. In 2024, the Kymi mill and other UPM operations in the city employed approximately 780 people. A total of 669 people worked in the Kymi integrated mill, and we also hired 119 summer workers.

Responsible sourcing

UPM is committed to responsible sourcing practices throughout the entire supply chain. We require all suppliers to comply with the UPM Supplier Code and Third Party Code. The target is to have 100% of raw material spend and 80% of all spend covered by UPM Supplier and Third Party Code by 2030. In 2024, 96% of the value of raw material purchases in Kymi came from such suppliers.



Environmental parameters

The figures related to production as well as raw material and energy consumption are published as aggregated figures on group level in the UPM Corporate Environmental and Societal Responsibility Statement.

		2022	2023	2024
Production capacity	Coated and uncoated fine paper Pulp	715,000 t 870,000 t	715,000 t 870,000 t	715,000 t 870,000 t
Raw materials	Wood Purchased pulp Chemicals	See UPM Corporate Environmental and Societal Responsibility Statement for more information		
Energy	Biomass-based fuels Fossil fuels Purchased energy ¹⁾	87% 13%	89% 11%	89% 11%
Emissions to air	Sulfur, SO ₂ Nitrogen oxides Carbon dioxide, CO ₂ (on-site fossil emissions, scope 1) Carbon dioxide, CO ₂ (fossil emissions from purchased energy, scope 2) Particles	48,6 t (SO ₂ and malodorous sulfur emissions as sulfur dioxide) 878 t 108,075 t 52,147 t 176 t	24,7 t (SO ₂ and malodorous sulfur emissions as sulfur dioxide) 1,243 t 87,143 t 50,186 t 141 t	26,5 t (SO ₂ and malodorous sulfur emissions as sulfur dioxide) 1,243 t 83,500 t 47,063 t 145 t
Water intake	Process and cooling water	68,789,718 m ³	79,664,613 m ³	82,027,963 m ³
Discharges to water	Cooling water Effluent COD _{Cr} BOD ₇ AOX Phosphorus Nitrogen	37,875,566 m ³ 30,914,152 m ³ 5,420 t 97 t 52.9 t 3.61 t 105.3 t	44,380,707 m ³ 35,283,906 m ³ 6,755 t 85 t 68 t 3.5 t 68.5 t	49,255,360 m ³ 32,772,603 m ³ 7,216 t 97 t 69 t 3.0 t 68.7 t
By-products	Lime sludge Sodium bisulfite Total	2,633 t 337 t 2,970 t	2,892 t 1,321 t 4,213 t	3,203 t 1,020 t 4,223 t
Waste²⁾	Landfill - green liquor dregs - lime sludge - mixed waste - process waste - construction waste Reused waste - ash - green liquor dregs - sludge - lime, lime sludge - bark and wood waste - cores and wrapping - waste paper and cardboard - metal - combustible waste - construction waste - biowaste - soil - other waste Temporarily stored waste intended for reuse - ash	 6,666 t - - - - - 4,533 t - 548 t 204 t 2,100 t 3,996 t 151 t 341 t - 825 t 15 t 939 t 203 t 29 t	 9,035 t - - - - - 4,692 t 544 t 226 t 495 t 7,186 t 1,979 t 428 t 648 t - 556 t 20 t 1,150 t 336 t 608 t	 9,382 t - - - - - 4,221 t - 45 t 3,457 t 6,457 t 2,482 t 77 t 603 t - 118 t 21 t 1,567 t 226 t 0 t
Hazardous waste		103 t	1,951 t	183 t
Land use	Total use of land Total sealed area Total nature-oriented area on site	255 ha 110 ha 145 ha	255 ha 112 ha 143 ha	255 ha 115 ha 140 ha

The figures include Kymen Voima Oy's waste and emissions with regard to the energy consumed by the Kymi site.

¹⁾ See the Group's Corporate Environmental and Societal Responsibility Statement for more information (e.g. energy indicators)

²⁾ Dry weight

The pulp mill's performance against targets in 2024

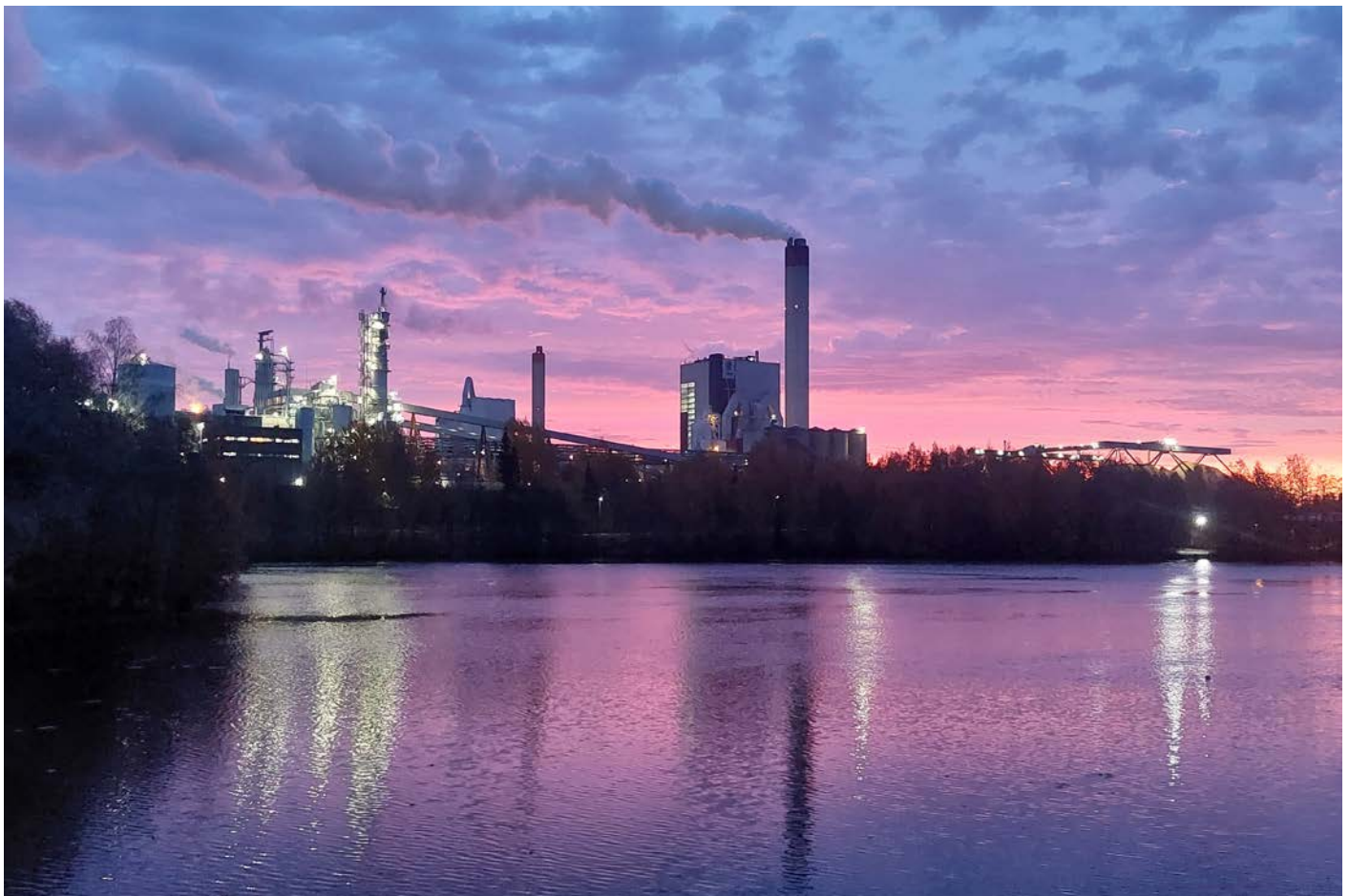
Targets and indicators	Achievement	Comments
No permissible limits exceeded – Classes 3 to 5	Yes	No permissible limits exceeded.
Solid waste to landfill <12.5 kg of dry matter/tonne of pulp	Yes	Actual figure below target. The amount of green liquor dregs remains high.
Water consumption <36.5 m ³ /tonne of pulp	Yes	Actual figure below target. Fiber line washing optimized.
COD emissions <8.5 kg/tonne of pulp	No	The production of the fiber line had to be limited, which increases the specific emissions.
AOX emissions <0.10 kg/tonne of pulp	Yes	Optimization of fiber line washing and chlorine dioxide doses, and steady, good performance of the wastewater treatment plant.
Solids to river <1.0 t/d	Yes	The wastewater treatment plant has been running smoothly and efficiently.
CO₂ emissions <70 kg of CO ₂ /tonne of pulp	Yes	Natural gas was still used as fuel in the lime kiln. CO ₂ conducted to the PCC plant is deducted from the sum.
SO₂ + TRS emissions <0.1 kg of sulfur/tonne of pulp	Yes	Actual figure below target. Minimizing unplanned shutdowns.
NO_x emissions <140 kg/tonne of pulp	No	Re-optimization of lime kiln running parameters for the switch from fuel oil to natural gas.
Lime kiln particulates <0.05 kg/tonne of pulp	Yes	The electrostatic precipitator worked efficiently.

The paper mill's performance against targets in 2024

Targets and indicators	Achievement	Comments
No abnormal emissions in 2024 – Classes 3 to 5	Yes	Continuous improvement of environmental awareness and identification of risks.
Reducing water consumption at the paper mill <10 m ³ /tonne of paper	No	The higher than targeted levels were due to line shutdowns and washing caused by temporary adjustments in production. A thesis on reducing the use of process water was completed in October 2024.
Solids loss at the paper mill to the treatment plant <10 kg/tonne of paper	No	The higher than targeted levels were due to line shutdowns and washing caused by temporary adjustments in production. The use of picking pastes and concentrate is maximized. The use of rejects has been increased on both paper machines.
Number of environmental observations 60 observations/year	Yes	Improving environmental awareness.

Pulp mill targets for 2025

Targets and indicators	Schedule	Responsibilities by department
No permissible limits exceeded - Classes 3 to 5	2025	Stable, good performing of the wastewater treatment plant. Implementation of planned maintenance work.
Solid waste to landfill <12.0 kg of dry matter/tonne of pulp	2025	Actively participating in research seeking re-use applications for green liquor dregs. Finding a beneficial use for green liquor dregs.
Water consumption < 36,5 m ³ /tonne of pulp	2025	Continuing to optimize the washing process.
COD emissions <9.0 kg/tonne of pulp	2025	Optimization of fiber line washes and good, steady operation of the wastewater treatment plant.
AOX emissions <0.10 kg/tonne of pulp	2025	Optimization of fiber line washing and chlorine dioxide doses and steady operation of the wastewater treatment plant.
Solids to river < 1.0 t/d	2025	Maintaining steady operation and proceeding with scheduled maintenance work at the wastewater treatment plant.
CO₂ emissions <70 kg of CO ₂ /tonne of pulp	2025	Optimization of the run and fuel selection of the lime kiln. Attaining a good paper mill operation rate.
SO₂ + TRS emissions <0.1 kg of sulfur/tonne of pulp	2025	Minimizing unplanned shutdowns.
NO_x emissions <140 kg/tonne of pulp	2025	Explanation of the cause of the higher NO _x levels in the lime kiln. Minimizing unplanned shutdowns.
Lime kiln particulates <0.05 kg/tonne of pulp	2025	Efficient operation of electrostatic precipitators.



Paper mill targets for 2025

Targets and indicators	Schedule	Responsibilities by department
No abnormal emissions in 2025 - Classes 3 to 5	2025	Continuous improvement of environmental awareness and risk identification.
Reducing water consumption at the paper mill <10 m ³ /tonne of paper	2025	Improving paper machine runnability. Measures to reduce the use of process water have been initiated.
Solids loss at the paper mill <10 kg/tonne of paper	2025	Improving paper machine runnability. Optimization of the running program with regard to the use of picking pastes.
Number of environmental observations 60 observations/year	2025	Improving environmental awareness.



Revalidation statement

As an accredited environmental verifier (FI-V-0001), Kiwa Sertifiointi Oy has examined the environmental management system and UPM Kymi Environmental and Societal Responsibility 2024 statement as well as the information concerning UPM Kymi in the UPM Corporate Environmental and Societal Responsibility Statement 2024.

On the basis of this examination, the environmental verifier has herewith confirmed on 2025-04-16 that the environmental management system, the Finnish UPM Kymi Environmental and Societal Responsibility 2024 statement and the information concerning UPM Kymi in the Finnish Updated UPM Corporate Environmental and Societal Responsibility Statement 2024 are in compliance with the requirements of the EMAS Regulation (EC) No 1221/2009.



upm.com

UPM Kymi

45700 Kuusankoski
Tel.: +358 204 151 21

More information
info.kymi@upm.com

Päivi Hyvärinen
Environmental Manager, Pulp Mill
Tel.: +358 204 152 514
paivi.hyvarinen@upm.com

Sanna Karjalainen
Environmental Specialist, Pulp Mill
Tel.: +358 40 660 4422
sanna.karjalainen@upm.com

Saila-Sisko Vartti
Safety and Environmental Manager,
Paper Mill
Tel.: +358 50 558 5058
saila-siskovartti@upm.com

Mervi Ojala
Senior Specialist,
Stakeholder Relations
Tel.: +358 20 415 2110
mervi.ojala@upm.com