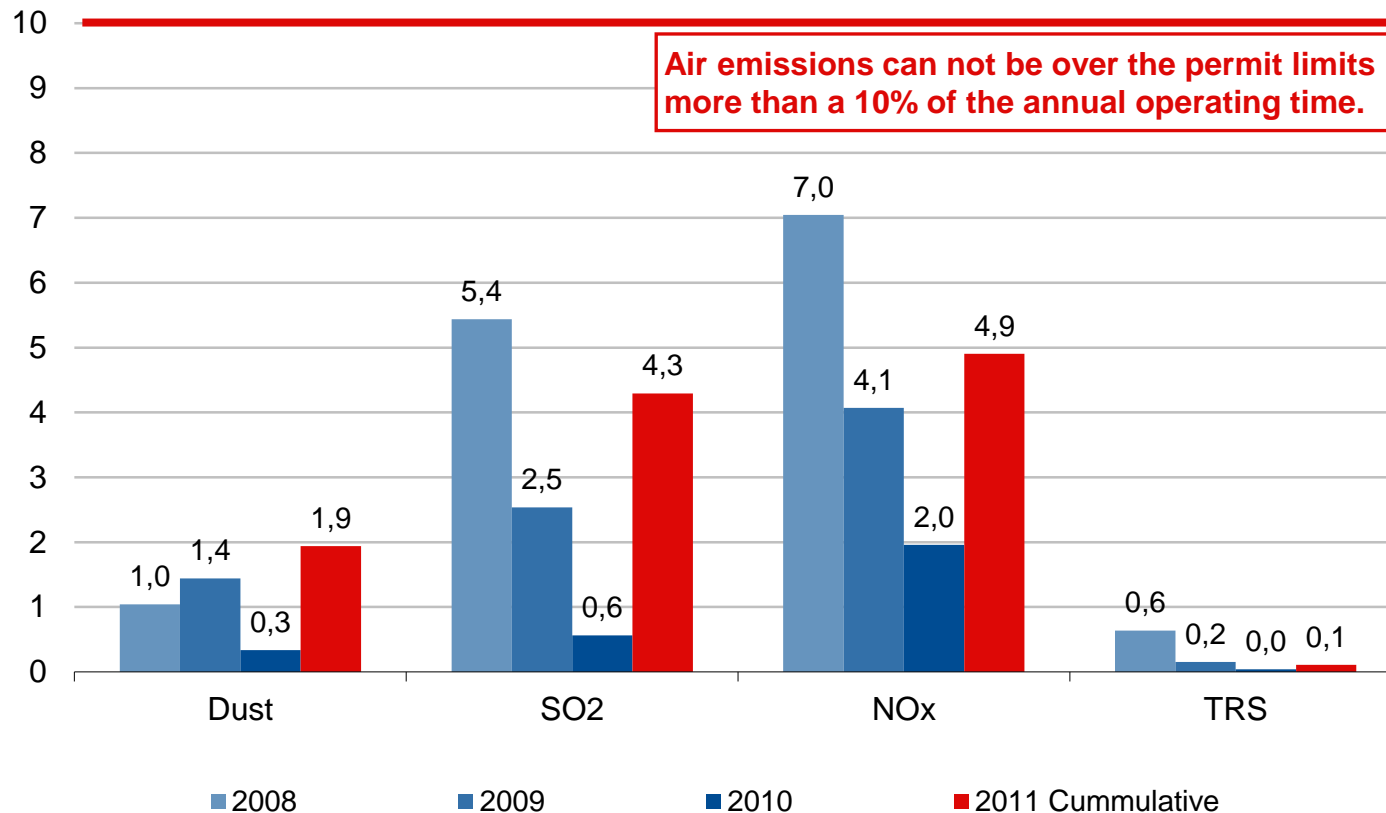


# **Environmental performance**

Emissions to the air

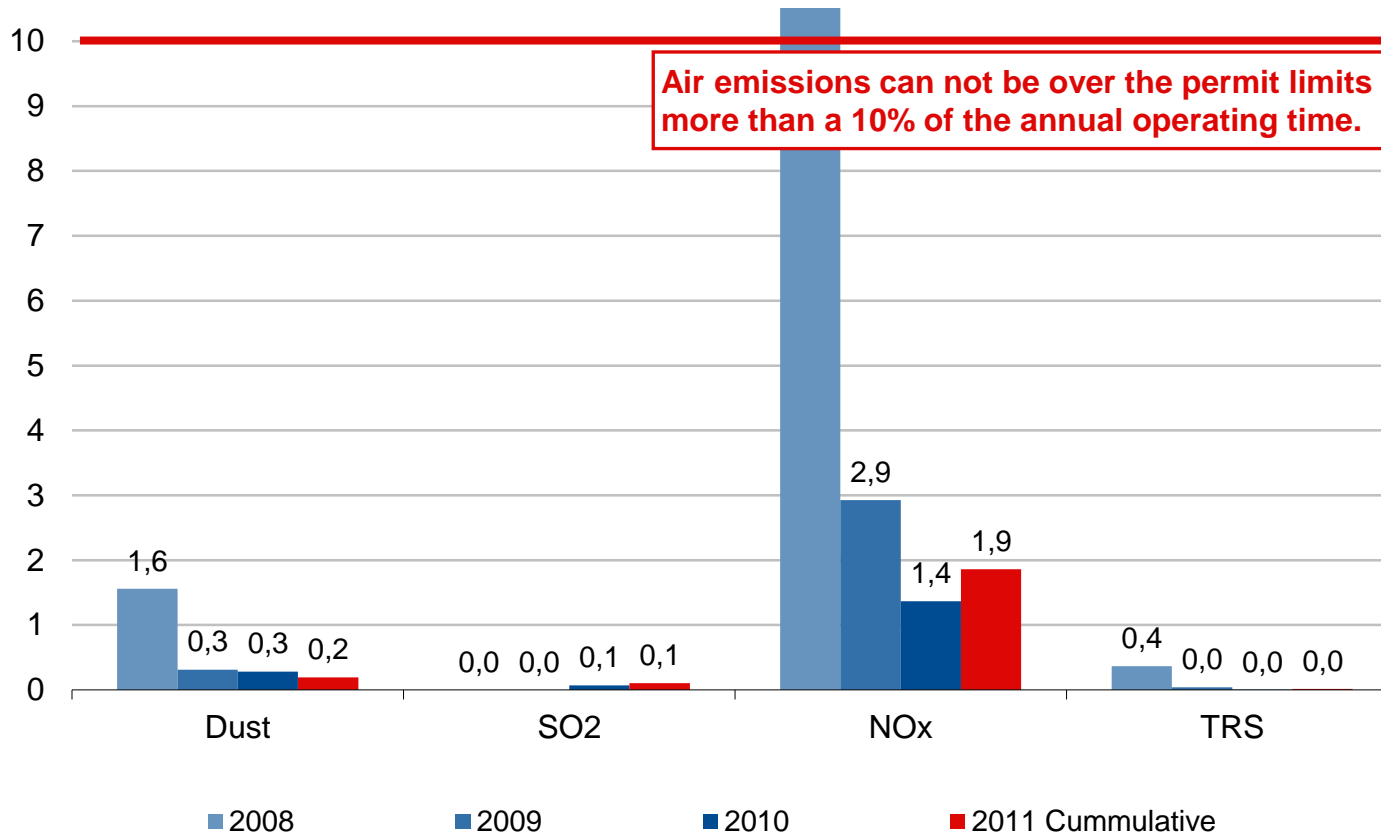
# Air emissions - % of time over the limits

## Boilers - % of time over permit limit

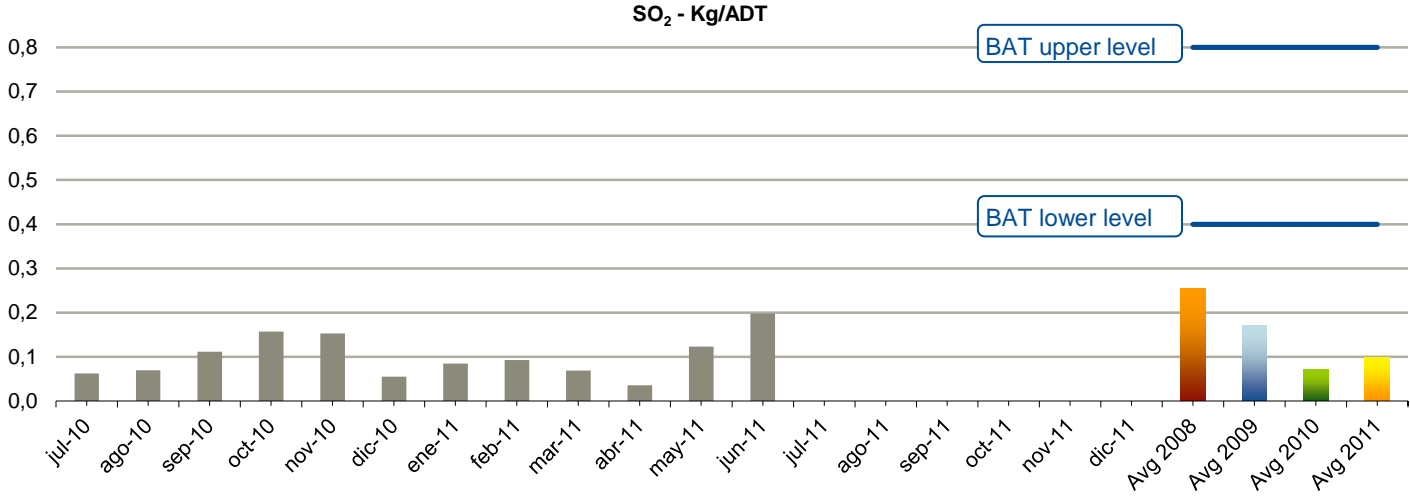


# Air emissions - % of time over the limits

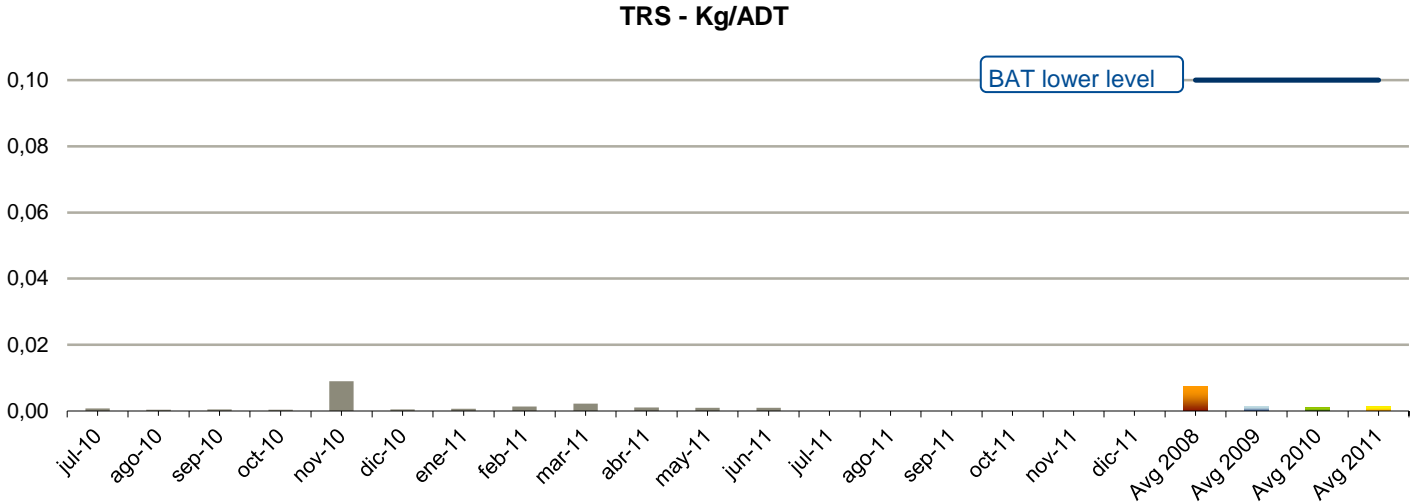
Lime kiln - % of time over permit limit



# Air emissions – SO<sub>2</sub>

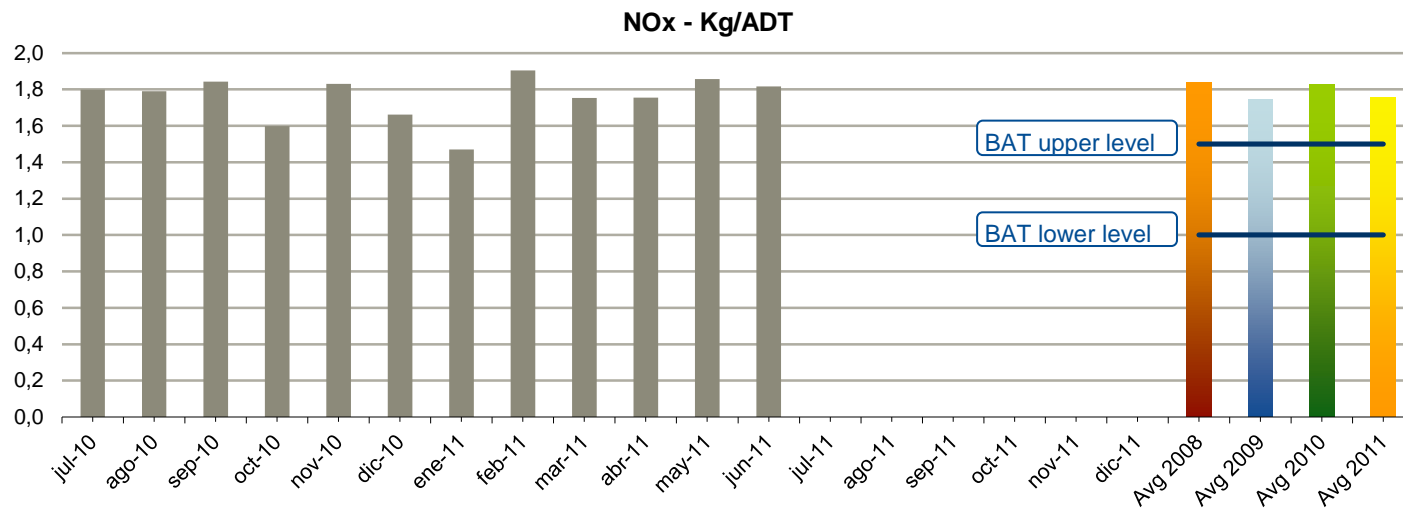


# Air emissions – TRS

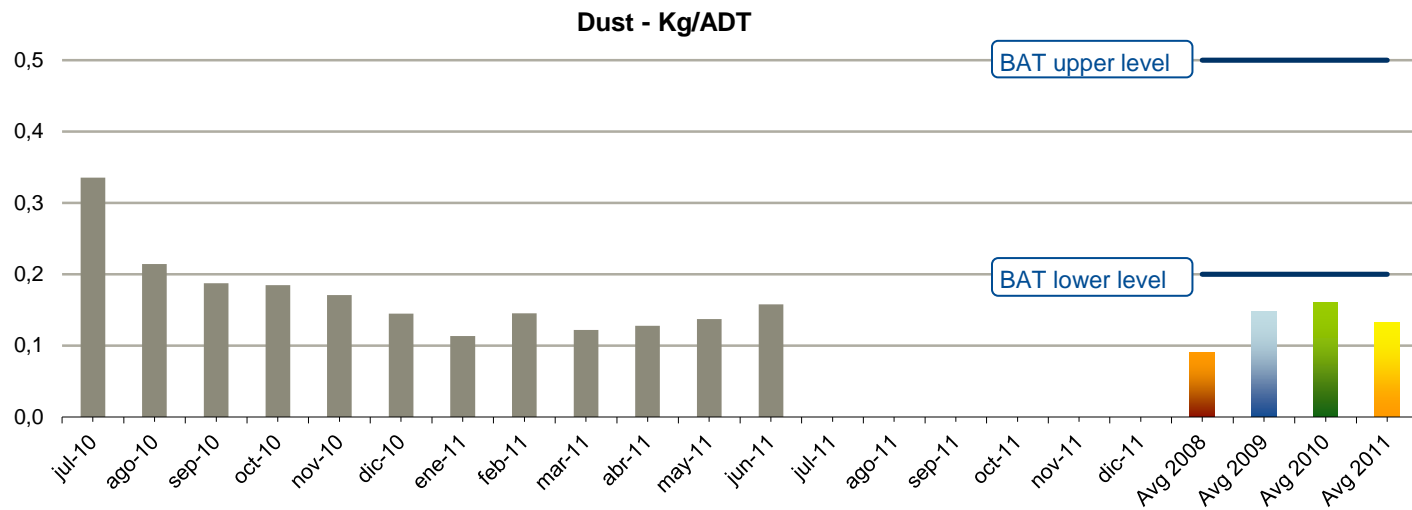




# Air emissions – NOx



# Air emissions – Dust





**UPM**

The Biofore  
Company